

OT-4G-09 – LTE/3G, LTE/2G, GNSS Portable Tracker with Dual- Power, APP & Web Support

RoHS
Compliant

Available on the
App Store

ANDROID APP ON
Google play



helpYou24
OpenGTS
GpsGate

Applications

- Law enforcement agent⁰, detective
- Vehicle security/anti-theft
- Fleet Management
- Personal care
 - Elders, children, lone workers,
 - People who exposed to potential dangers, such as social workers, standalone workers
- Amusement – worn by hunting dogs

Overview

OT-4G-09 is designed to be a compact device with all necessary components built-inside, demonstrating ultra-high performance while keeping small dimension.

Thanks to the high efficiency GNSS and cellular modules/ antennas, OT-4G-09 could be used at almost anywhere in a vehicle, brought by people, or worn by hunting dogs. Moreover, it's designed with the latest 4G LTE cellular technology while still providing 3G or 2G connectivity to ensure complete population and geographic coverage as LTE rolls out.

Features

- Based on latest LTE plus 3G or 2G coverage
- Sensitive GPS+GLONASS with AGPS support
- Dual-power supply
 - Internal 1540mAh Li-ion rechargeable battery
 - ◆ Built-in charging/protection circuit
 - ◆ Sub-models (A, E, G, J, U, V)
 - Internal 8000mAh Li-polymer rechargeable battery (optional)
 - ◆ Built-in charging/protection circuit


- ◆ Sub-models (B, F, H, K, T, W)
- External power (optional)
 - ◆ From 12V/24V vehicle battery with power adapter cable or
 - ◆ High-capacity battery pack (e.g. 17000mAh)
 - Power could be switched OFF or ON by power switch button.
 - Smart switching between two power sources
 - External power loss alarm
 - Indication of both power levels and power low alerts
 - Smart power saving by 3-axis g-sensor allowing long working time (1500mAh)
 - ◆ 21-hour¹ once per minute continuous reports with internal battery ⁵
 - ◆ 1-month¹ working time with external battery pack; 4-hour/day, once/minute
- Option of external power supply only - No internal battery
 - To extend operating temperature range,
 - ◆ Could be switched ON/OFF
 - ◆ Sub-models (C)
 - Plug and play as external power connected
 - ◆ Power ON/OFF as external power is ON/OFF respectively.
 - ◆ Sub-models (I)
- Covert, long standby time for asset protection

Reliable, 4G LTE GPS&GLONASS Tracker / OT-4G-09

Notification Service (iOS) or GCM Service (Android)

⁵ Customization for longer working time is welcome

Specifications

Dimension (mm)	91.5 x 54.3 x 17 (A, E, G, J, U, V) 91.5 x 61 x 34.6 (B, F, H, K, T, W)
I/O (1: higher one) 1/2 3 4 5 	1. Power switch button x 1, 2. LED (blue) x 1, 3. Micro-SIM x 1, 4. Ear phone connector (Φ2.5) x 1, 5. RCY connector x 1
Internal Battery/ Charging Time Charging Voltage	Rechargeable, Li-ion, 1500mAh / 3 hours 20 minutes (via USB 3.0) 8000mAh/ 13 hours (via 2A adapter) DC 4.75 ~ 5.25 V
External Power	JST RCY connector - SYR-02T DC 3.6 ~ 4.4 V
Positioning	GPS/GLONASS/QZSS w/ AGPS
Cellular	Model A,B, C : Telstra/APAC 4G LTE: Band 3,5,8,28; 3G WCDMA: Band 1,5,8 Model E,F : EMEA, APAC 4G LTE: Band 1,3,8,20,28; 2G GPRS: Band 3,8 Model G,H,I : EMEA, APAC 4G LTE: Band 1,3,8,20,28; 3G WCDMA: Band 1,8 2G GPRS: Band 3,8 Model U,T : AT&T, T-Mobile 4G LTE: Band 2,4,5,12; 3G WCDMA: Band 2,4 Model V,W : Verizon/USA 4G LTE: Band 4,13 Model J,K : Docomo/Japan 4G LTE: Band 1,18,19
G-sensor	3-axis, ±2g~±16g
Power Consumption	OFF: 11uA Hibernate: 160uA

- The big battery models allow standby time longer than 3 months.
 - ◆ Report once every 30 minute
- Strong magnet sticks to covert location easily.
- Ideal for agriculture machines & similar assets
- Compact & strong
 - No wiring-demand, all antennas built-inside
 - ◆ GPS + GLONASS antenna
 - ◆ 4G + 3G + 2G antenna
 - Drop-safe
 - Plug & play - SIM card-based auto APN select
- Worldwide LTE-band support
 - Australia/Asia
 - Europe
 - Japan
 - USA
- Easy waterproof by sealing the bottom interfaces
- Regular live position update could be enabled or disabled. Various report interval is available.
- Geo-fence with in/out options
 - Easy setting - click & drag on map
- Data buffering as there is no cellular coverage
 - Data stored in local memory
 - Automatically re-transmit as coverage is back
- Latest location query
 - A voice call will trigger a location update. ²
 - APP can also send a SMS to get the location.
- Multi-language support – English, Japanese, Chinese and more.
- Powerful functions for law-enforcement agents only.
Please contact us for the details.

Notes.

⁰ Special functions for law enforcement agency available

¹ Fully charged new battery, 25 °C,

² It is not available now.

³ G-sensor, magnetometer support required

⁴ Smartphone required with support of Apple Push

(w/ Internal Battery)	Sleep: 300uA Idle: 2.3 ~ 3.5 mA Regular working: 50 ~ 250 mA
Capacity of Data Buffer (by Flash)	16,384 records – i.e. 273 hours or 11 days if data is continuously sent once per minute
Watertight	Suitable protection at bottom I/O side allows it to achieve IPX6
Weight	88g (A, E, J, U, V) 626g (B, F, K, T, W)
Temperature	Working: -20°C ~ 60 °C Storage: -20°C ~ 35 °C

Major Functions

Power ON/OFF	Toggle switch button by a paper clip Power ON: A short click on power button turns on the tracker if it was previously OFF. It keeps on with a short click if it was previously ON. Power OFF: Click and hold on power button, LED becomes steady ON. Power is then OFF as LED is OFF. Other power ON conditions ^{&} : <ul style="list-style-type: none"> ● Connecting external power ● Disconnecting external power ● Charging internal battery
Blue LED	Wakeup from sleep: One blink Power ON: 5 blinks Power OFF: Steady ON then OFF (when LED OFF, power is also OFF) Charging: steady ON, done: OFF
Φ2.5 connector	Internal battery charging
RCY connector	External power input
Geo-Fence alert	Circular x 10, IN and/or OUT
Battery low alert	15% battery capacity for both powers
Report interval	Time configurable when working in live/regular position report state
OTA	Firmware upgrade

(Over The Air)	Tracker setting/configuration
Position viewing	App, Web, SMS
Smart phone APP support	Android, iOS - Setup, live, history, event, etc. <ul style="list-style-type: none"> ● Push notification ● AR; Augmented reality³ ● Compass searching³ ● Navigation
Login account	<ul style="list-style-type: none"> ● 1 login account for each tracker ● QR-code scan login support ● Add your own login alias ● Add other trackers under your account with their permission ● No limit on number of trackers ● Organize trackers in groups ● No limit on number of groups
Language	English, Japanese, Chinese etc.
History	30-day server log
Server Support	SDK for Windows/Linux OpenGTS GpsGate

[&] Works only when the battery is not over discharged.

Smartphone APP Support

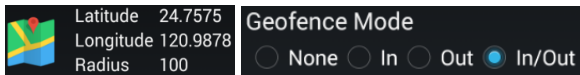
- An easy to use and powerful smartphone APP – **helpYou24** is ready for free download, for both **iOS** (8.1+) and **Android** (3.0+) devices.



- Enjoy all useful APP functions after scan the tracker's **QR-code**. Live or history at your fingertips.
- Remember to enable the **cloud notification** function - Get informed right away in case an event occurs.

Example Application Scenario – Position⁴

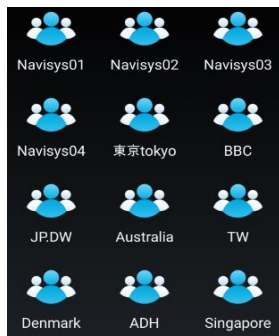
- Geo-fence notification informs you that your children/parents left/came home/school etc.



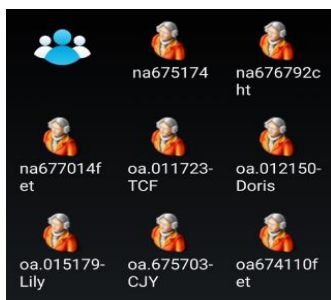
- Advanced scheduling provides more geo-fence reminding functions.
- Each login shows the current location of a tracker.
- Force a location update by awaking the tracker.
- If battery power goes low, one gets a battery low notification.

Example Application Scenario – Groups

- The helpYou24 APP allows creating unlimited number



of **groups** (or fleets) and unlimited number of **members** (vehicles) in one



group.

- To reorganize groups and their members by simply tapping on icons. More than 100 useful icons are at your choice for different members.
- Cloud notification for all members in all groups, one won't miss any critical information, E.g. 1237 unread alerts in following snapshot.



- There are more functions all aim to help one having one's **peace of mind**.

Example Application Scenario – Guard⁴

- It's inevitable that one has to leave her/his treasured

Reliable, 4G LTE GPS&GLONASS Tracker / OT-4G-09

asset (e.g. a car, a bike, motorcycles, etc.) outside.

Can one get informed if someone else try to move your asset? Yes, the **Guard** function is the right answer. One or multiple people could be informed.

- Enable the **Guard** function on smartphone by just a tap on this function before you leave the asset.



- Disable the **Guard** function on smartphone by just a tap on this function before you move it by yourself.

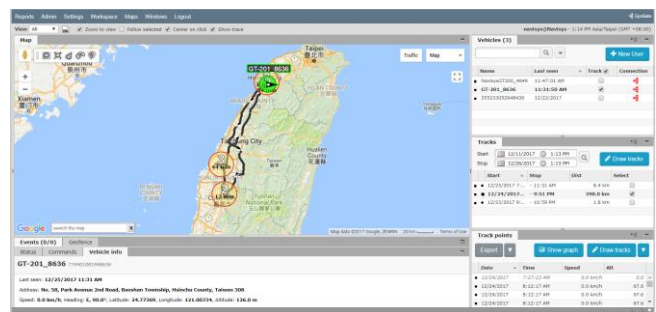
Detective/Vehicle Tracking⁴

- Move alert by cloud notification with siren
- 12/24V power adapter cable for vehicle use

OpenGTS Support



GpsGate Support



Ordering Information (sub-model list)

Model	Bands			Module	Internal	Power
	4G	3G	2G		Battery	Switch
OT-4G-09						
A	3,5,8,28	1,5,8	-	ELS61-AUS	1540	Y
B	3,5,8,28	1,5,8	-	ELS61-AUS	8000	Y
C	3,5,8,28	1,5,8	-	ELS61-AUS	-	Y
E	1,3,8,20,28	-	3,8	ELS61-E2	1540	Y
F	1,3,8,20,28	-	3,8	ELS61-E2	8000	Y
G	1,3,8,20,28	1,8	3,8	ELS61-E R2	1540	Y
H	1,3,8,20,28	1,8	3,8	ELS61-E R2	8000	Y
I	1,3,8,20,28	1,8	3,8	ELS61-E R2	-	-
J	1,18,19	-	-	ELS31-J	1540	Y
K	1,18,19	-	-	ELS31-J	8000	Y
U	2,4,5,12	2,4	-	ELS61-US	1540	Y
T	2,4,5,12	2,4	-	ELS61-US	8000	Y
V	4,13	-	-	ELS31-V	1540	Y
W	4,13	-	-	ELS31-V	8000	Y

Reliable, 4G LTE GPS&GLONASS Tracker / OT-4G-09

*ODM is welcome.

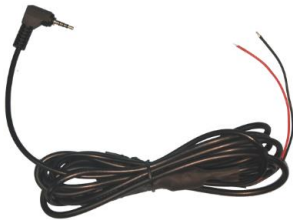

*The final functions might be different for different customers. Please confirm your spec with our sales.

*This document is subject to change without notice.

Standard Accessory

<p>Charging cable - Two ends: Ear phone connector (Φ2.5; to tracker) and type A USB connector (to power source) Length: 50cm</p>	
--	--

Optional Accessory

<p>Power adapter cable - 12/24, input range 5~30V, 35V transient tolerable Output: 3.8V Two ends: Earphone connector (to tracker) and open wires (to vehicle)</p>	
<p>17000 mAh battery pack with strong magnet</p>	

Package

- GT-201 body x 1
- Charging cable x 1
- Quick Start Guide x 1